

A decorative graphic on the left side of the slide, consisting of a network of white lines and small circles on a blue gradient background, resembling a circuit board or a stylized tree structure.

PERSPECTIVE AND DISTORTIONS

WHAT BODY CAMERA FOOTAGE DOES (AND DOESN'T) SHOW

The background is a blue gradient. In the corners, there are white line-art illustrations of circuit boards or neural networks, with lines connecting to small circles.

We don't see things as they are,
we see them as we are

Anonymous



PRODUCTS ▾ SOLUTIONS ▾ TRAINING ▾ CAREERS NEWS RESOURCES ▾ SUPPORT



A LOOK A LOOK



SEE WHERE PUBLIC SAFETY IS GOING



[COMPACT & LIGHTWEIGHT
FOR FAST BACKUP]

SCOTT V. HARRIS, 550 U.S. 372 (2007)

MAJORITY OPINION

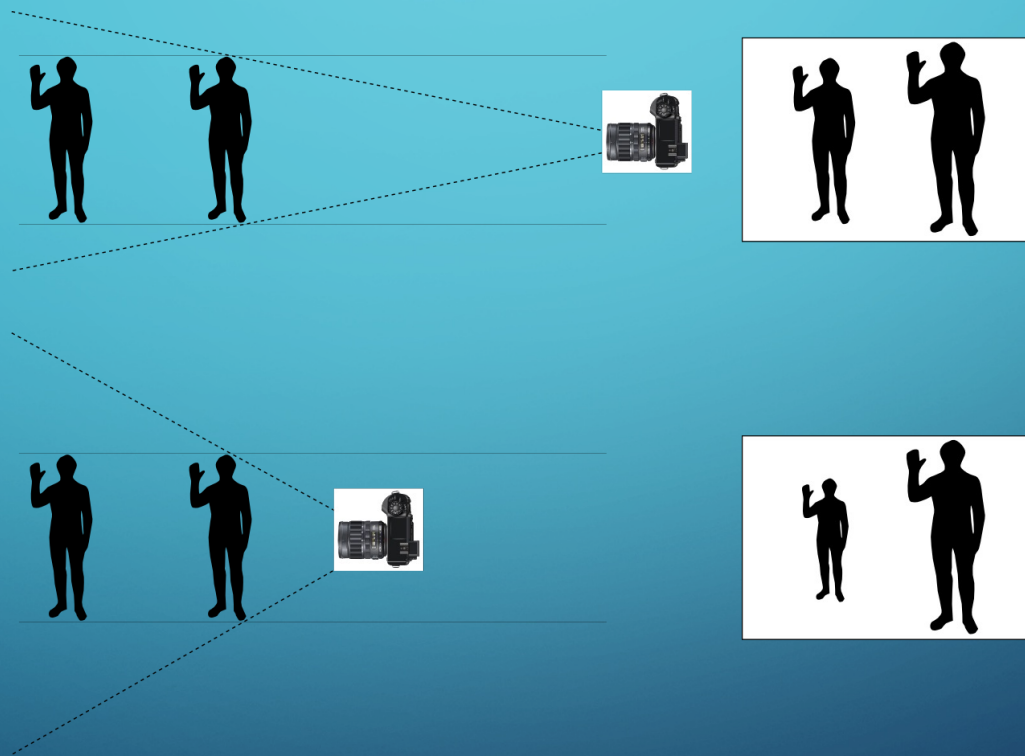
- When opposing parties tell two different stories, one of which is blatantly contradicted by the record, so that no reasonable jury could believe it, a court should not adopt that version of the facts for purposes of ruling on a motion for summary judgment.
- That was the case here with regard to the factual issue whether respondent was driving in such fashion as to endanger human life. Respondent's version of events is so utterly discredited by the record that no reasonable jury could have believed him. The Court of Appeals should not have relied on such visible fiction; it should have viewed the facts in the light depicted by the videotape.

SCOTT V. HARRIS, 550 U.S. 372 (2007)

STEVENS DISSENT

- I can only conclude that my colleagues were unduly frightened by two or three images on the tape that looked like bursts of lightning or explosions, but were in fact merely the headlights of vehicles zooming by in the opposite lane. Had they learned to drive when most high-speed driving took place on two-lane roads rather than on superhighways—when split-second judgments about the risk of passing a slow-poke in the face of oncoming traffic were routine—they might well have reacted to the videotape more dispassionately.

PROXIMITY AFFECTS PERCEPTION



OBJECTS MAY APPEAR LARGER THAN THEY ARE



NEW GENERATION AXON 4

Axon Body 4 has a larger field of view of 160 degrees, or an 18% optional view increase from prior models, getting the camera closer to capturing everything the human eye can.



Officers no longer need to decide between using chest mounted cameras or flexible POV modules, as the Axon Body 4 has the option to add on a quick connecting POV camera with the Flex POV module.

PERSPECTIVE MATTERS



THERE IS A BUFFER



DEVICE AUDITS

- Camera registered
- Camera status change
- Power on or off
- Event button press or hold
- Recording start or end
- Audio recording disabled or enabled
- Camera docked or undocked
- Video accessed or streamed using Axon View or Evidence Sync
- Category updated using Axon View or Evidence Sync
- ID updated using Axon View or Evidence Sync

- Title updated using Axon View or Evidence Sync
- Function button press or hold
- Battery status button press or hold
- Volume mute, low, medium, or high
- Stealth mode enabled or disabled
- Indicator lights enabled or disabled
- Marker added
- GPS coordinates added
- Date/Time Sync
- Camera assignment
- Firmware updated

THERE IS AN AUDIT TRAIL

Account Statuses

Edit Other User Account Information

Adding a user

Deactivating and Reactivating Users

Expire all passwords

Resetting passwords and security questions

Viewing a user audit trail

Re-inviting a User

Unlocking a user account

Changing a username

Importing Users in Bulk

Viewing a user audit trail

🕒 Last Modified - Aug 24, 2023

A user audit trail shows many of the activities taken by the user in addition to changes to the user account. User audit trails are available two formats:

- PDF format — Well suited for use in court.
- Comma-separated values (CSV) format — Supported by spreadsheet applications such as Microsoft Excel and helpful for simplifying reporting and integration with other systems.

Evidence-related user actions that appear in user audit trails include the following:

- View evidence
- Watch video evidence
- Initiate evidence deletion
- Restore deleted evidence
- Upload evidence
- Add or edit evidence title
- Add or edit evidence ID
- Add or edit categories assigned to evidence
- Add or edit evidence location
- Edit evidence recorded date and time
- Extend evidence retention period
- Flag or un-flag evidence
- Share evidence internally (with users in your Evidence.com agency)
- Share evidence externally (with users outside your Evidence.com agency)
- Add or edit evidence tags
- Add or edit evidence description
- Add, edit, or remove evidence notes
- Reassign evidence
- Add evidence to a case
- Add a marker
- Download a marker
- Add a video clip
- Add video redaction

LOTS OF AXON PRODUCTS



AXON SIGNAL

CEW Settings

Early Access Devices

Signal Configuration

🕒 Last Modified - Aug 24, 2023

- [Axon Signal Vehicle](#), the in-vehicle product, can report certain in-vehicle events, such as turning on a vehicle's light bar, to alert Axon cameras to begin recording.
- [Axon Fleet 3 Hub](#), which includes the Signal triggers for Axon Fleet 3 cameras.
- [Signal Performance Power Magazine \(SPPM\)](#), an accessory for TASER X2 and X26P Smart Weapons, can report when a CEW is armed, when the trigger is pulled, and/or when the arc is engaged to alert Axon cameras to begin recording.
- [Axon Signal Sidearm](#), a holster accessory, can report when a sidearm is drawn to alert Axon cameras to begin recording.

Evidence Upload XT admin settings

the Body Worn and Fleet cameras are alerted based on the settings.

Configure Signal Vehicle Settings

Note: In the August 2019 release, the Evidence Audit Trails and Device Audit Trails were updated to specifically reflect the Signal Input pin number on the Axon Signal Vehicle that initiated an Axon Fleet camera activation signal. In situations where two inputs were active at the time of camera activation, both Axon Signal input pins are included in the audit trail entry.

AXON RESPOND

REQUEST INFO

Real-time situational awareness leads to faster responses and safer officers

GET THE COMPLETE PICTURE

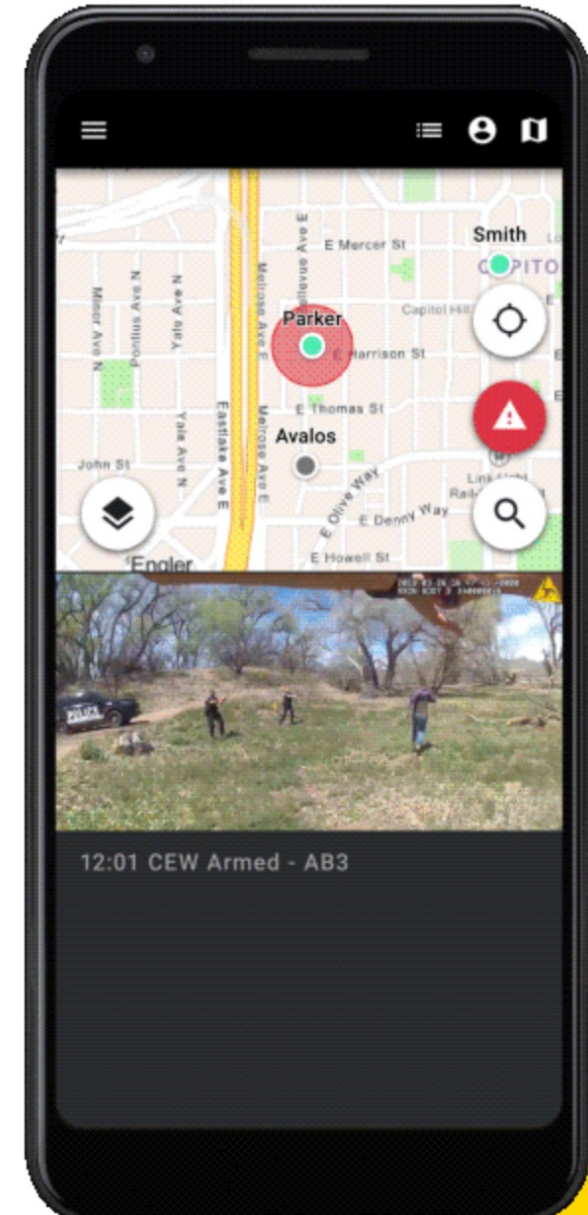
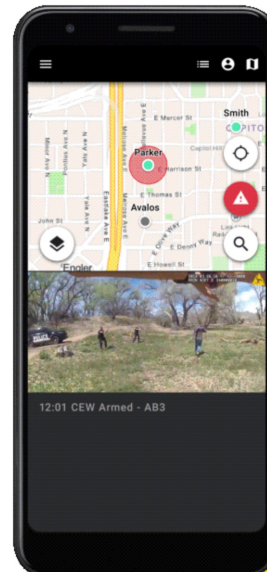
Respond integrates location data and video feeds from your Axon devices to give you a complete picture of evolving situations on any device anywhere.

PART OF YOUR REAL-TIME OPERATIONS

Data gathered from connected sensors is immediately accessible within Axon Dispatch. The result: better visibility and faster responses.

SEAMLESS CONNECTIVITY WITH AXON DEVICES

Respond works seamlessly with Axon Body 3 and Axon Body 4 cameras, Air drones, and Fleet 3 in-car video system. See what's happening on the ground and in the sky.



WHAT CAN AXON RESPOND DO?

/ LOCATION VALIDATION

Dispatch can know an officer's location at any time to stay informed and connected.

/ REAL-TIME SUPPORT

Support teams have bi-directional communication over livestreams with Axon Body 4.

/ WITNESS INTERVIEWS

An investigator could look for details that the on-scene officer may not be able to focus on.

/ SOCIAL DISTANCING

Trying to minimize officers at a scene? Axon Respond lets you use livestreams for remote viewing.

/ WATCH ME INTEGRATION

Integrates with Axon Body 4's Watch Me feature so officers can request support teams remotely view their live stream when they want a second set of eyes.

SUPER NON TECHNICAL POINT



WATCH ALL OF THE VIDEO



The background is a blue gradient with white circuit-like lines in the corners. These lines consist of straight segments and small circles, resembling a stylized electronic circuit board.

TECH ISSUES IN YOUR CASE?

Contact us

4AC@nacdl.org