A hand holding a compass over a desert landscape with a winding road. The hand is wearing a green long-sleeved shirt. The compass is a standard analog compass with a white face and black markings. The background shows a desert landscape with a winding road and a body of water in the distance.

Beyond the Basics: Cross Examination

Karen Smolar

CPCS, Training Director

NCDC, Dean



The Starting Place



Baby Steps

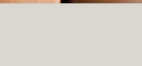


The Aha Moment



A pair of black-rimmed glasses is centered in the frame. The background is a light blue-grey surface covered with numerous small, white, rectangular tiles, each containing a single black letter. The letters are scattered across the entire surface, both inside and outside the lenses of the glasses. The glasses are slightly out of focus, with the letters appearing sharper. The text "Theory Of The Witness" is overlaid on the left side of the image, in a white serif font.

Theory Of The Witness



An open book with a dark cover and aged, yellowish pages is shown from a top-down perspective. The book is open to a spread that features a stylized illustration. The background of the spread is a deep blue. In the center, a large, light blue mountain peak rises, its top and ridges covered in white snow. Several white, fluffy clouds are scattered around the mountain: one to the left, one to the right, and a larger cluster at the base of the mountain. The text 'Storytelling Through Cross' is written in a white, serif font on the left page of the spread.

Storytelling Through Cross

Intentional Vocabulary





Theory-Driven Headlines



THINGS NOT DONE
Making it Matter

RUBRIC :

- YOU WERE TRAINED IN THIS THING
- THIS THING MATTERS
- THIS THING MATTERS IN THIS CASE
- YOU HAD THE ABILITY TO DO THIS THING
- YOU DIDN'T DO THIS THING

Pushing Past The Paper



If This is True What
Else is True

Crossing Without Paper



A black and white photograph showing two hands clasped together in a supportive grip. The hands are positioned in the center-right of the frame, with fingers interlaced. The person on the left is wearing a dark suit jacket, and the person on the right is wearing a dark suit jacket with a white shirt cuff visible. The background is dark and out of focus. The word "Empathy" is written in a white serif font on the left side of the image.

Empathy



Getting The No

Adaptability



Effective, Powerful, Persuasive Cross

